

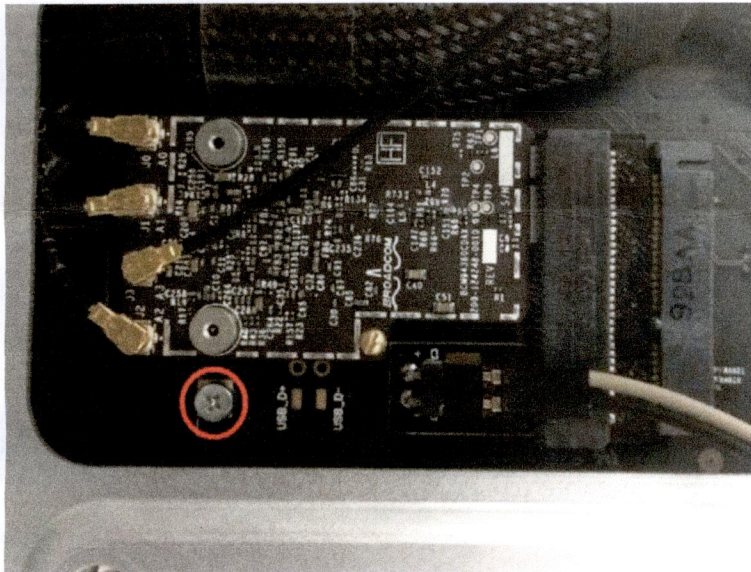
---

# Installation Guide

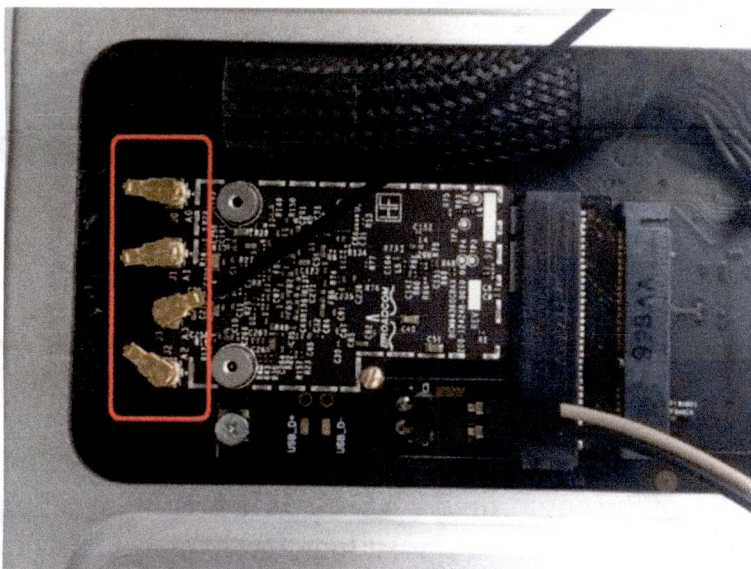
## Apple Broadcom BCM94360CD for Mac Pro 2009, 2010-2012

---

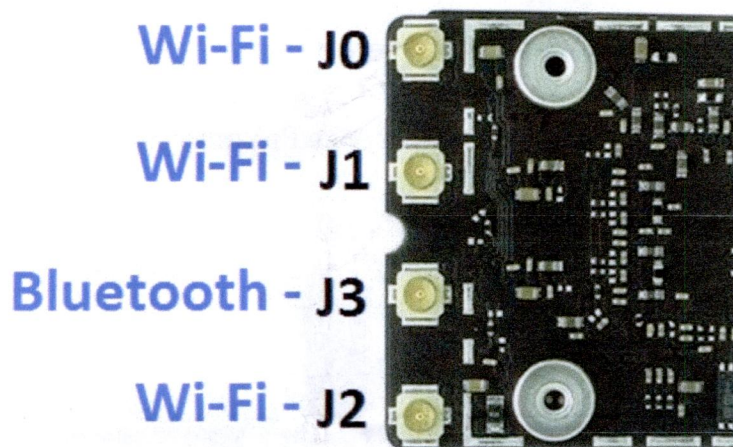
**Step 1:** Install the card with adapter into your Mac Pro mini PCIe slot and tighten it in place.



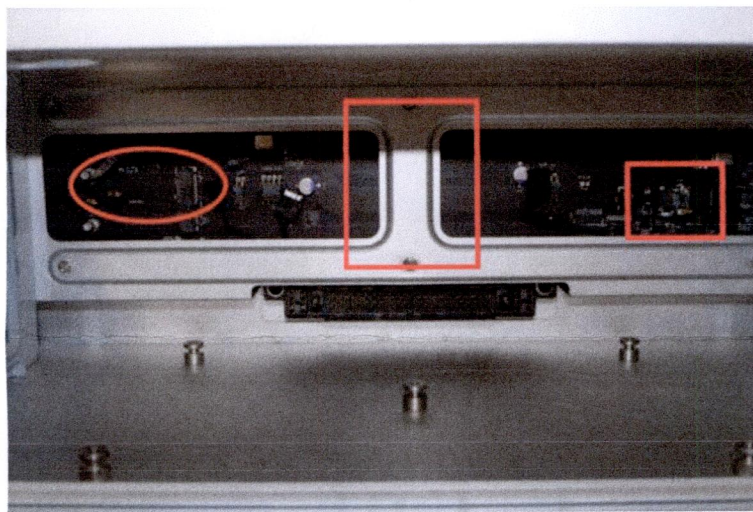
**Step 2:** Carefully attach RP-SMA cables to U.FL connectors as shown below. (Given that Mac Pro have only three antennas and BCM94360CD and BCM94331CD requires four, you will need an additional antenna or extension cable).



The following picture shows the locations of W-Fi and Bluetooth antenna connectors



**Step 2a:** If you acquired the Bluetooth antenna extension, please connect the female side of this extension to the Bluetooth connector on the card. The opposite end of the antenna extension has to go behind the central column (custom USB cable as well) and connect with the original Bluetooth antenna cable (disconnected from the old original Bluetooth card).

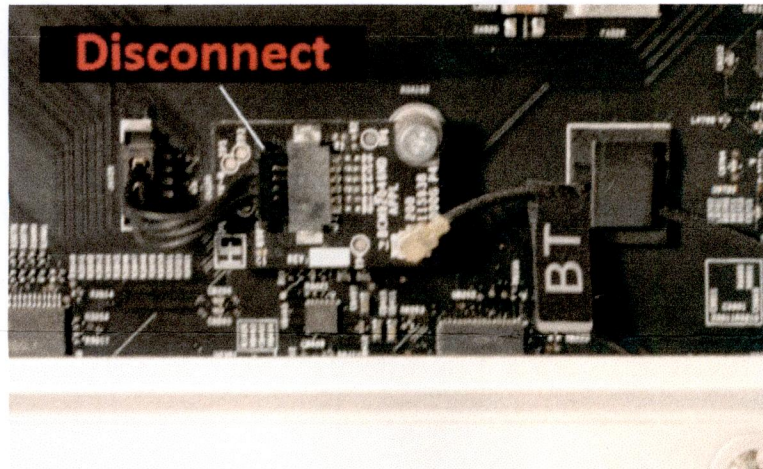


**Step 2b:** Please note, due to small size and delicate nature of the parts, this step should be done very carefully. If you acquired the Bluetooth antenna, please connect it to the Bluetooth connector on the card. Since the environment can be different, there is no perfect place for the antenna. The antenna is best to be placed closest to your keyboard and mouse.



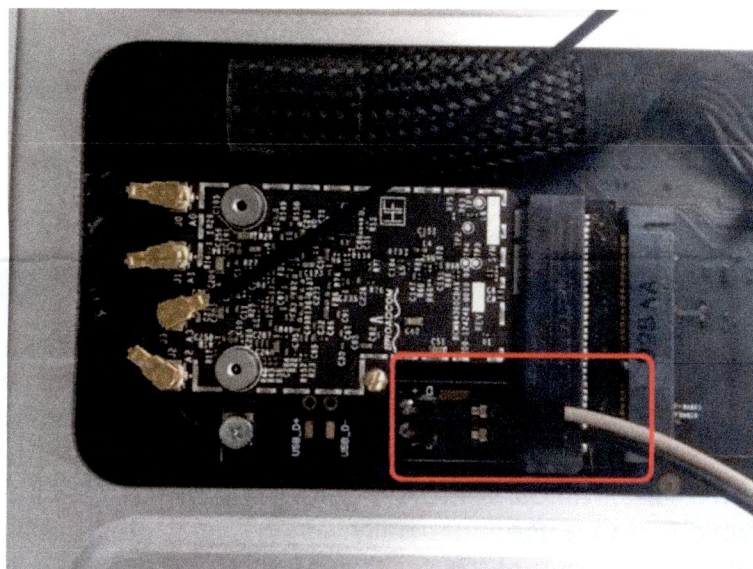
---

**Step 3:** Please disconnect 4-wired cable from the old Bluetooth card in order to disconnect the old Bluetooth card from the system.



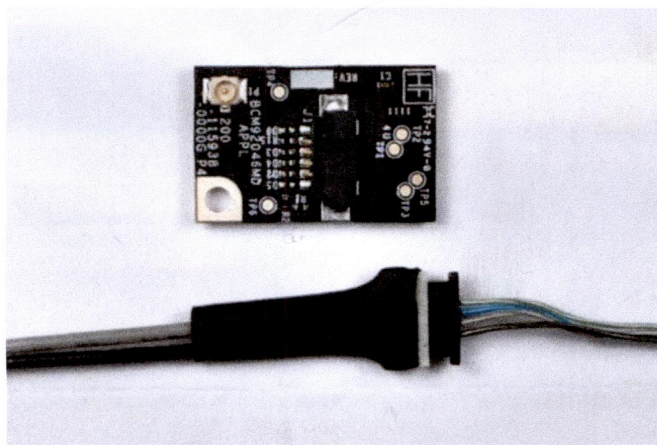
**Step 4:** Connect custom USB cable as shown below.

**Important:** Make sure Grey wire connects to D+ (connector closest to wireless card) and black wire connects to D- (connector furthest from wireless card)



---

**Step 5:** The opposite side of the custom USB cable connects to the disconnected 4-wired cable from the old Bluetooth card.



**Step 6:** Check everything you have done, get your Mac Pro back in one piece, and turn on.

## TROUBLESHOOTING TIPS

### TIP # 1

If WiFi or Bluetooth are not working properly upon installation, try to completely disassemble the full kit, including removing the Apple card from the adapter, and assemble it back. As you assemble, try to insert the Apple card into adapter, as straight as possible, without extending too much force.

### TIP # 2

If you are using Mac Pro 2009-2012, please note that the original Bluetooth antenna provides very weak Bluetooth signal. Therefore, if you are experiencing the lagging with your Bluetooth accessories, or the problem with Handoff and Airdrop (working only in close proximity to the system), you will need to use a different Bluetooth antenna. Our store offers such an antenna: <http://www.osxwifi.com/wireless-internal-antenna-for-bluetooth-macpro-4-1-and-mac-pro-5-1>, which can be used internally, as well as routed outside of the case, to solve the problem of the reception of the original antenna.